

AL(LGA) series Axial Leaded Inductors

◆ Features

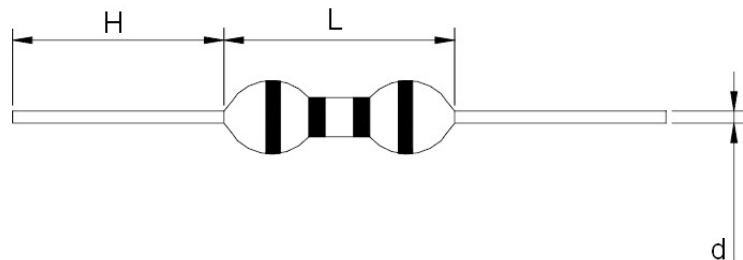
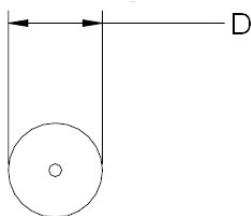
- » Wide inductance range
- » Ideal for auto insertion
- » Conformal coated inductors
- » Epoxy resin coating makes it high reliability
- » Special magnetic core structure contributes to high Q and Self-Resonant Frequencies
- » working temperature /Operating Temperature range from -40C degrees to +85C degrees



◆ Applications

- » RF coils
- » Choke coils
- » Peaking coils

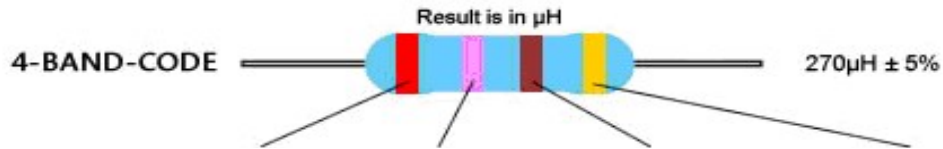
◆ Dimension



Unit: mm

| Type | L(max) | ϕ D(max) | H | ϕ d |
|-------------|--------|---------------|------|-----------|
| AL(LGA)0512 | 12 | 5 | 25±3 | 0.60±0.05 |
| AL(LGA)0410 | 10 | 4 | 26±3 | 0.65±0.05 |
| AL(LGA)0307 | 7 | 3 | 28±3 | 0.50±0.05 |

◆ COLOR CODE



| 色碼(Color) | 代表數字 (Significant figures) | 倍率 (Multiplier) | 誤差 (Tolerance) | | 溫度系數 (Temp. Coefficient) (ppm/K) | |
|-----------|----------------------------------|--------------------|-------------------|---|---|---|
| 黑(Black) | 0 | $\times 10^0$ | — | | 250 | U |
| 棕(Brown) | 1 | $\times 10^1$ | $\pm 1\%$ | F | 100 | S |
| 紅(Red) | 2 | $\times 10^2$ | $\pm 2\%$ | G | 50 | R |
| 橙(Orange) | 3 | $\times 10^3$ | — | | 15 | P |
| 黃(Yellow) | 4 | $\times 10^4$ | — | | 25 | Q |
| 綠(Green) | 5 | $\times 10^5$ | $\pm 0.5\%$ | D | 20 | Z |
| 藍(Blue) | 6 | $\times 10^6$ | $\pm 0.25\%$ | C | 10 | Z |
| 紫(Violet) | 7 | $\times 10^7$ | $\pm 0.1\%$ | B | 5 | M |
| 灰(Gray) | 8 | $\times 10^8$ | $\pm 0.05\%$ | A | 1 | K |
| 白(White) | 9 | $\times 10^9$ | — | | — | — |
| 金(Gold) | — | $\times 10^{-1}$ | $\pm 5\%$ | J | — | — |
| 銀(Silver) | — | $\times 10^{-2}$ | $\pm 10\%$ | K | — | — |
| 透明(None) | — | — | $\pm 20\%$ | M | — | — |

1. Any temperature coefficient not assigned its own letter shall be marked "Z", and the coefficient found in other documentation.
2. For more information, see EN 60062.

◆ Part Number

| | | | | | | |
|----------------|-------------|---------------------|------------------|----------|--------------------------|------------------------------|
| AL(LGA) | 0307 | - 4R7 | M | - | T | |
| Type | Size | Inductance | Tolerance | | Package | Forming |
| | 0410 | 4.7uH = 4R7 | K= ±10% | | T= Taping in box | Blank = Straight Lead |
| | 0307 | | | | | |
| | 0512 | 1000uH = 102 | M= ±20% | | R= Taping in reel | F = F type |
| | 0612 | | | | B= Bulk | |

◆ Electrical Specifications

»AL(LGA)0512

| PART NUMBER | INDUCTANCE (uH) | TOLERANCE | Q (min) | DCR (Ω) (max) | IDC (mA) (max) | SRF(MHz) (min) | TEST FREQ. (f) |
|----------------------|-----------------|------------|---------|---------------|----------------|----------------|----------------|
| AL(LGA)0512-1R0-T(R) | 1 | 20%,10% | 25 | 0.025 | 4000 | 140 | 25.2M |
| AL(LGA)0512-1R2-T(R) | 1.2 | 20%,10% | 70 | 0.03 | 3800 | 128 | 7.96M |
| AL(LGA)0512-1R5-T(R) | 1.5 | 20%,10% | 70 | 0.035 | 3600 | 115 | 7.96M |
| AL(LGA)0512-1R8-T(R) | 1.8 | 20%,10% | 70 | 0.038 | 3500 | 110 | 7.96M |
| AL(LGA)0512-2R2-T(R) | 2.2 | 20%,10% | 70 | 0.042 | 3200 | 100 | 7.96M |
| AL(LGA)0512-2R7-T(R) | 2.7 | 20%,10% | 70 | 0.058 | 2900 | 90 | 7.96M |
| AL(LGA)0512-3R3-T(R) | 3.3 | 20%,10% | 70 | 0.065 | 2600 | 83 | 7.96M |
| AL(LGA)0512-3R9-T(R) | 3.9 | 20%,10% | 70 | 0.08 | 2300 | 74 | 7.96M |
| AL(LGA)0512-4R7-T(R) | 4.7 | 20%,10% | 70 | 0.09 | 2200 | 68 | 7.96M |
| AL(LGA)0512-5R6-T(R) | 5.6 | 20%,10% | 80 | 0.1 | 2000 | 60 | 7.96M |
| AL(LGA)0512-6R8-T(R) | 6.8 | 20%,10% | 80 | 0.12 | 1800 | 55 | 7.96M |
| AL(LGA)0512-8R2-T(R) | 8.2 | 20%,10% | 80 | 0.14 | 1600 | 50 | 7.96M |
| AL(LGA)0512-100-T(R) | 10 | 20%,10%,5% | 80 | 0.16 | 1500 | 39 | 7.96M |
| AL(LGA)0512-120-T(R) | 12 | 20%,10%,5% | 60 | 0.19 | 1300 | 27 | 2.52M |
| AL(LGA)0512-150-T(R) | 15 | 20%,10%,5% | 50 | 0.21 | 1200 | 16 | 2.52M |
| AL(LGA)0512-180-T(R) | 18 | 20%,10%,5% | 45 | 0.23 | 1100 | 12 | 2.52M |
| AL(LGA)0512-220-T(R) | 22 | 20%,10%,5% | 40 | 0.26 | 1000 | 9.5 | 2.52M |
| AL(LGA)0512-270-T(R) | 27 | 20%,10%,5% | 40 | 0.29 | 950 | 7 | 2.52M |
| AL(LGA)0512-330-T(R) | 33 | 20%,10%,5% | 40 | 0.31 | 830 | 5.5 | 2.52M |
| AL(LGA)0512-390-T(R) | 39 | 20%,10%,5% | 40 | 0.37 | 780 | 5 | 2.52M |

| PART NUMBER | INDUCTANCE (uH) | TOLERANCE | Q (min) | DCR (Ω) (max) | IDC (mA) (max) | SRF(MHz) (min) | TEST FREQ. (f) |
|----------------------|-----------------|------------|---------|------------------------|----------------|----------------|----------------|
| AL(LGA)0512-470-T(R) | 47 | 20%,10%,5% | 40 | 0.4 | 750 | 4.8 | 2.52M |
| AL(LGA)0512-560-T(R) | 56 | 20%,10%,5% | 30 | 0.53 | 680 | 4.2 | 2.52M |
| AL(LGA)0512-680-T(R) | 68 | 20%,10%,5% | 30 | 0.59 | 650 | 4 | 2.52M |
| AL(LGA)0512-820-T(R) | 82 | 20%,10%,5% | 25 | 0.64 | 620 | 3.6 | 2.52M |
| AL(LGA)0512-101-T(R) | 100 | 20%,10%,5% | 25 | 0.7 | 600 | 3.2 | 2.52M |
| AL(LGA)0512-121-T(R) | 120 | 20%,10%,5% | 40 | 0.95 | 580 | 2.8 | 796K |
| AL(LGA)0512-151-T(R) | 150 | 20%,10%,5% | 40 | 1.08 | 550 | 2.5 | 796K |
| AL(LGA)0512-181-T(R) | 180 | 20%,10%,5% | 40 | 1.2 | 520 | 2.2 | 796K |
| AL(LGA)0512-221-T(R) | 220 | 20%,10%,5% | 35 | 1.35 | 500 | 2 | 796K |
| AL(LGA)0512-271-T(R) | 270 | 20%,10%,5% | 35 | 1.5 | 460 | 1.8 | 796K |
| AL(LGA)0512-331-T(R) | 330 | 20%,10%,5% | 35 | 2 | 430 | 1.6 | 796K |
| AL(LGA)0512-391-T(R) | 390 | 20%,10%,5% | 35 | 2.2 | 400 | 1.4 | 796K |
| AL(LGA)0512-471-T(R) | 470 | 20%,10%,5% | 35 | 2.4 | 350 | 1.2 | 796K |
| AL(LGA)0512-561-T(R) | 560 | 20%,10%,5% | 35 | 3.2 | 330 | 1.1 | 796K |
| AL(LGA)0512-681-T(R) | 680 | 20%,10%,5% | 35 | 3.5 | 300 | 1 | 796K |
| AL(LGA)0512-821-T(R) | 820 | 20%,10%,5% | 30 | 4 | 280 | 1 | 796K |
| AL(LGA)0512-102-T(R) | 1000 | 20%,10%,5% | 30 | 4.4 | 260 | 0.9 | 796K |
| AL(LGA)0512-122-T(R) | 1200 | 20%,10%,5% | 60 | 10 | 200 | 0.8 | 252K |
| AL(LGA)0512-152-T(R) | 1500 | 20%,10%,5% | 60 | 11.8 | 180 | 0.7 | 252K |
| AL(LGA)0512-182-T(R) | 1800 | 20%,10%,5% | 60 | 13 | 160 | 0.65 | 252K |
| AL(LGA)0512-222-T(R) | 2200 | 20%,10%,5% | 60 | 14.5 | 150 | 0.58 | 252K |
| AL(LGA)0512-272-T(R) | 2700 | 20%,10%,5% | 60 | 20 | 130 | 0.5 | 252K |
| AL(LGA)0512-332-T(R) | 3300 | 20%,10%,5% | 60 | 23 | 120 | 0.47 | 252K |
| AL(LGA)0512-392-T(R) | 3900 | 20%,10%,5% | 50 | 25 | 110 | 0.45 | 252K |
| AL(LGA)0512-472-T(R) | 4700 | 20%,10%,5% | 50 | 27.5 | 100 | 0.42 | 252K |
| AL(LGA)0512-562-T(R) | 5600 | 20%,10%,5% | 40 | 30 | 90 | 0.4 | 252K |
| AL(LGA)0512-682-T(R) | 6800 | 20%,10%,5% | 35 | 40 | 80 | 0.35 | 252K |
| AL(LGA)0512-822-T(R) | 8200 | 20%,10%,5% | 30 | 44 | 70 | 0.3 | 252K |
| AL(LGA)0512-103-T(R) | 10000 | 20%,10%,5% | 30 | 50 | 68 | 0.28 | 252K |

| PART NUMBER | INDUCTANCE (uH) | TOLERANCE | Q (min) | DCR (Ω) (max) | IDC (mA) (max) | SRF(MHz) (min) | TEST FREQ. (f) |
|----------------------|-----------------|------------|---------|------------------------|----------------|----------------|----------------|
| AL(LGA)0512-123-T(R) | 12000 | 20%,10%,5% | 30 | 82 | 64 | 0.25 | 79.6K |
| AL(LGA)0512-153-T(R) | 15000 | 20%,10%,5% | 30 | 93 | 55 | 0.22 | 79.6K |
| AL(LGA)0512-183-T(R) | 18000 | 20%,10%,5% | 35 | 105 | 48 | 0.2 | 79.6K |
| AL(LGA)0512-223-T(R) | 22000 | 20%,10%,5% | 35 | 118 | 40 | 0.18 | 79.6K |
| AL(LGA)0512-273-T(R) | 27000 | 20%,10%,5% | 35 | 135 | 40 | 0.17 | 79.6K |
| AL(LGA)0512-333-T(R) | 33000 | 20%,10%,5% | 30 | 200 | 38 | 0.15 | 79.6K |
| AL(LGA)0512-393-T(R) | 39000 | 20%,10%,5% | 30 | 215 | 36 | 0.13 | 79.6K |
| AL(LGA)0512-473-T(R) | 47000 | 20%,10%,5% | 30 | 240 | 32 | 0.12 | 79.6K |
| AL(LGA)0512-563-T(R) | 56000 | 20%,10%,5% | 30 | 260 | 30 | 0.1 | 79.6K |
| AL(LGA)0512-683-T(R) | 68000 | 20%,10%,5% | 30 | 290 | 28 | 0.09 | 79.6K |

»AL(LGA)0410

| PART NUMBER | INDUCTANCE (μ H) | Q (min) | DCR (Ω) (max) | IDC (mA) (max) | SRF(MHz) (min) | TEST FREQ. (f) |
|-----------------------|--------------------------|------------|---------------------------|-------------------|-------------------|----------------|
| AL(LGA)0410-R10M-T(R) | 0.10 \pm 20% | 25 | 0.060 | 1700 | 480 | 25.2MHz |
| AL(LGA)0410-R12M-T(R) | 0.12 \pm 20% | 25 | 0.060 | 1640 | 450 | 25.2MHz |
| AL(LGA)0410-R15M-T(R) | 0.15 \pm 20% | 25 | 0.070 | 1560 | 420 | 25.2MHz |
| AL(LGA)0410-R18M-T(R) | 0.18 \pm 20% | 25 | 0.070 | 1480 | 400 | 25.2MHz |
| AL(LGA)0410-R22M-T(R) | 0.22 \pm 20% | 25 | 0.080 | 1400 | 380 | 25.2MHz |
| AL(LGA)0410-R27M-T(R) | 0.27 \pm 20% | 25 | 0.090 | 1320 | 340 | 25.2MHz |
| AL(LGA)0410-R33M-T(R) | 0.33 \pm 20% | 25 | 0.100 | 1280 | 300 | 25.2MHz |
| AL(LGA)0410-R39M-T(R) | 0.39 \pm 20% | 25 | 0.120 | 1200 | 280 | 25.2MHz |
| AL(LGA)0410-R47M-T(R) | 0.47 \pm 20% | 25 | 0.130 | 1150 | 250 | 25.2MHz |
| AL(LGA)0410-R56M-T(R) | 0.56 \pm 20% | 25 | 0.140 | 1100 | 230 | 25.2MHz |
| AL(LGA)0410-R68M-T(R) | 0.68 \pm 20% | 25 | 0.150 | 1030 | 210 | 25.2MHz |
| AL(LGA)0410-R82M-T(R) | 0.82 \pm 20% | 45 | 0.160 | 980 | 172 | 25.2MHz |
| AL(LGA)0410-1R0K-T(R) | 1.00 \pm 10% | 45 | 0.170 | 920 | 157 | 25.2MHz |
| AL(LGA)0410-1R2K-T(R) | 1.20 \pm 10% | 50 | 0.180 | 880 | 144 | 7.96MHz |
| AL(LGA)0410-1R5K-T(R) | 1.50 \pm 10% | 50 | 0.200 | 830 | 131 | 7.96MHz |
| AL(LGA)0410-1R8K-T(R) | 1.80 \pm 10% | 55 | 0.220 | 790 | 121 | 7.96MHz |
| AL(LGA)0410-2R2K-T(R) | 2.20 \pm 10% | 55 | 0.240 | 750 | 110 | 7.96MHz |
| AL(LGA)0410-2R7K-T(R) | 2.70 \pm 10% | 60 | 0.250 | 720 | 100 | 7.96MHz |
| AL(LGA)0410-3R3K-T(R) | 3.30 \pm 10% | 65 | 0.300 | 670 | 94 | 7.96MHz |
| AL(LGA)0410-3R9K-T(R) | 3.90 \pm 10% | 65 | 0.350 | 640 | 86 | 7.96MHz |
| AL(LGA)0410-4R7K-T(R) | 4.70 \pm 10% | 70 | 0.400 | 620 | 80 | 7.96MHz |
| AL(LGA)0410-5R6K-T(R) | 5.60 \pm 10% | 70 | 0.450 | 590 | 74 | 7.96MHz |
| AL(LGA)0410-6R8K-T(R) | 6.80 \pm 10% | 75 | 0.500 | 550 | 68 | 7.96MHz |
| AL(LGA)0410-8R2K-T(R) | 8.20 \pm 10% | 80 | 0.600 | 530 | 53 | 7.96MHz |
| AL(LGA)0410-100K-T(R) | 10.0 \pm 10% | 80 | 0.650 | 500 | 45 | 7.96MHz |
| AL(LGA)0410-120K-T(R) | 12.0 \pm 10% | 75 | 0.700 | 480 | 34 | 2.52MHz |
| AL(LGA)0410-150K-T(R) | 15.0 \pm 10% | 70 | 0.750 | 460 | 20 | 2.52MHz |
| AL(LGA)0410-180K-T(R) | 18.0 \pm 10% | 65 | 0.800 | 430 | 14 | 2.52MHz |

| PART NUMBER | INDUCTANCE (μ H) | Q (min) | DCR (Ω) (max) | IDC (mA) (max) | SRF(MHz) (min) | TEST FREQ. (f) |
|-----------------------|--------------------------|------------|---------------------------|-------------------|-------------------|----------------|
| AL(LGA)0410-220K-T(R) | 22.0 \pm 10% | 50 | 0.900 | 410 | 9.9 | 2.52MHz |
| AL(LGA)0410-270K-T(R) | 27.0 \pm 10% | 55 | 1.000 | 390 | 7.6 | 2.52MHz |
| AL(LGA)0410-330K-T(R) | 33.0 \pm 10% | 55 | 1.100 | 370 | 6.3 | 2.52MHz |
| AL(LGA)0410-390K-T(R) | 39.0 \pm 10% | 50 | 1.200 | 350 | 6.3 | 2.52MHz |
| AL(LGA)0410-470K-T(R) | 47.0 \pm 10% | 45 | 1.300 | 340 | 6.3 | 2.52MHz |
| AL(LGA)0410-560K-T(R) | 56.0 \pm 10% | 40 | 1.500 | 320 | 6.2 | 2.52MHz |
| AL(LGA)0410-680K-T(R) | 68.0 \pm 10% | 40 | 1.800 | 305 | 5.7 | 2.52MHz |
| AL(LGA)0410-820K-T(R) | 82.0 \pm 10% | 35 | 2.000 | 290 | 5.3 | 2.52MHz |
| AL(LGA)0410-101K-T(R) | 100 \pm 10% | 30 | 2.500 | 275 | 4.8 | 2.52MHz |
| AL(LGA)0410-121K-T(R) | 120 \pm 10% | 70 | 3.000 | 185 | 3.8 | 0.796MHz |
| AL(LGA)0410-151K-T(R) | 150 \pm 10% | 70 | 4.200 | 175 | 3.5 | 0.796MHz |
| AL(LGA)0410-181K-T(R) | 180 \pm 10% | 70 | 4.600 | 165 | 3.3 | 0.796MHz |
| AL(LGA)0410-221K-T(R) | 220 \pm 10% | 70 | 5.100 | 155 | 3.0 | 0.796MHz |
| AL(LGA)0410-271K-T(R) | 270 \pm 10% | 65 | 6.000 | 145 | 2.8 | 0.796MHz |
| AL(LGA)0410-331K-T(R) | 330 \pm 10% | 65 | 6.500 | 137 | 2.6 | 0.796MHz |
| AL(LGA)0410-391K-T(R) | 390 \pm 10% | 65 | 7.500 | 133 | 2.4 | 0.796MHz |
| AL(LGA)0410-471K-T(R) | 470 \pm 10% | 60 | 8.500 | 126 | 2.2 | 0.796MHz |
| AL(LGA)0410-561K-T(R) | 560 \pm 10% | 60 | 9.500 | 120 | 2.1 | 0.796MHz |
| AL(LGA)0410-681K-T(R) | 680 \pm 10% | 55 | 12.000 | 113 | 1.9 | 0.796MHz |
| AL(LGA)0410-821K-T(R) | 820 \pm 10% | 55 | 14.000 | 105 | 1.8 | 0.796MHz |
| AL(LGA)0410-102K-T(R) | 1000 \pm 10% | 50 | 20.000 | 85 | 1.4 | 0.796MHz |

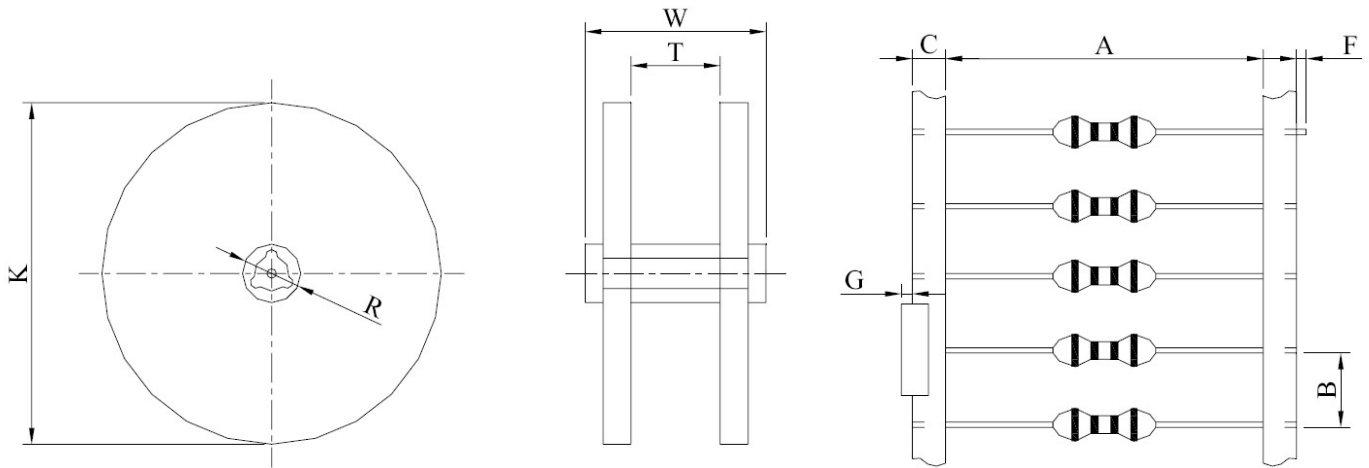
»AL(LGA)0307

| PART NUMBER | INDUCTANCE (μ H) | Q (min) | DCR (Ω) (max) | IDC (mA) (max) | SRF(MHz) (min) | TEST FREQ. (f) |
|-----------------------|--------------------------|------------|---------------------------|-------------------|-------------------|----------------|
| AL(LGA)0307-R10M-T(R) | 0.10 \pm 20% | 40 | 0.060 | 1400 | 480 | 25.2MHz |
| AL(LGA)0307-R12M-T(R) | 0.12 \pm 20% | 40 | 0.060 | 1350 | 450 | 25.2MHz |
| AL(LGA)0307-R15M-T(R) | 0.15 \pm 20% | 40 | 0.070 | 1270 | 420 | 25.2MHz |
| AL(LGA)0307-R18M-T(R) | 0.18 \pm 20% | 40 | 0.070 | 1200 | 400 | 25.2MHz |
| AL(LGA)0307-R22M-T(R) | 0.22 \pm 20% | 40 | 0.080 | 1150 | 380 | 25.2MHz |
| AL(LGA)0307-R27M-T(R) | 0.27 \pm 20% | 40 | 0.085 | 1110 | 360 | 25.2MHz |
| AL(LGA)0307-R33M-T(R) | 0.33 \pm 20% | 40 | 0.095 | 1110 | 350 | 25.2MHz |
| AL(LGA)0307-R39M-T(R) | 0.39 \pm 20% | 40 | 0.100 | 1000 | 320 | 25.2MHz |
| AL(LGA)0307-R47M-T(R) | 0.47 \pm 20% | 40 | 0.110 | 1000 | 300 | 25.2MHz |
| AL(LGA)0307-R56M-T(R) | 0.56 \pm 20% | 40 | 0.120 | 950 | 280 | 25.2MHz |
| AL(LGA)0307-R68M-T(R) | 0.68 \pm 20% | 40 | 0.130 | 900 | 250 | 25.2MHz |
| AL(LGA)0307-R82M-T(R) | 0.82 \pm 20% | 40 | 0.140 | 900 | 200 | 25.2MHz |
| AL(LGA)0307-1R0K-T(R) | 1.00 \pm 10% | 40 | 0.150 | 815 | 180 | 25.2MHz |
| AL(LGA)0307-1R2K-T(R) | 1.20 \pm 10% | 40 | 0.180 | 740 | 165 | 7.96MHz |
| AL(LGA)0307-1R5K-T(R) | 1.50 \pm 10% | 40 | 0.200 | 700 | 150 | 7.96MHz |
| AL(LGA)0307-1R8K-T(R) | 1.80 \pm 10% | 50 | 0.230 | 655 | 125 | 7.96MHz |
| AL(LGA)0307-2R2K-T(R) | 2.20 \pm 10% | 50 | 0.250 | 630 | 110 | 7.96MHz |
| AL(LGA)0307-2R7K-T(R) | 2.70 \pm 10% | 50 | 0.280 | 595 | 95 | 7.96MHz |
| AL(LGA)0307-3R3K-T(R) | 3.30 \pm 10% | 50 | 0.300 | 575 | 70 | 7.96MHz |
| AL(LGA)0307-3R9K-T(R) | 3.90 \pm 10% | 50 | 0.320 | 555 | 65 | 7.96MHz |
| AL(LGA)0307-4R7K-T(R) | 4.70 \pm 10% | 50 | 0.350 | 530 | 50 | 7.96MHz |
| AL(LGA)0307-5R6K-T(R) | 5.60 \pm 10% | 50 | 0.400 | 500 | 40 | 7.96MHz |
| AL(LGA)0307-6R8K-T(R) | 6.80 \pm 10% | 50 | 0.450 | 470 | 30 | 7.96MHz |
| AL(LGA)0307-8R2K-T(R) | 8.20 \pm 10% | 50 | 0.560 | 425 | 28 | 7.96MHz |
| AL(LGA)0307-100K-T(R) | 10.0 \pm 10% | 50 | 0.750 | 370 | 22 | 7.96MHz |
| AL(LGA)0307-120K-T(R) | 12.0 \pm 10% | 50 | 0.800 | 350 | 20 | 2.52MHz |
| AL(LGA)0307-150K-T(R) | 15.0 \pm 10% | 50 | 0.930 | 335 | 16 | 2.52MHz |
| AL(LGA)0307-180K-T(R) | 18.0 \pm 10% | 50 | 1.000 | 315 | 15 | 2.52MHz |
| AL(LGA)0307-220K-T(R) | 22.0 \pm 10% | 50 | 1.200 | 285 | 13 | 2.52MHz |

| PART NUMBER | INDUCTANCE (uH) | Q (min) | DCR (Ω) (max) | IDC (mA) (max) | SRF(MHz) (min) | TEST FREQ. (f) |
|------------------------|-----------------|---------|------------------------|----------------|----------------|----------------|
| AL(LGA)0307-270K-T(R) | 27.0±10% | 50 | 1.800 | 270 | 11 | 2.52MHz |
| AL(LGA)0307-330K-T(R) | 33.0±10% | 50 | 2.100 | 255 | 10 | 2.52MHz |
| AL(LGA)0307-390K-T(R) | 39.0±10% | 50 | 2.300 | 240 | 9.5 | 2.52MHz |
| AL(LGA)0307-470K-T(R) | 47.0±10% | 50 | 2.600 | 205 | 8.5 | 2.52MHz |
| AL(LGA)0307-560K-T(R) | 56.0±10% | 50 | 2.900 | 195 | 7.5 | 2.52MHz |
| AL(LGA)0307-680K-T(R) | 68.0±10% | 50 | 3.300 | 185 | 6.5 | 2.52MHz |
| AL(LGA)0307-820K-T(R) | 82.0±10% | 50 | 3.800 | 175 | 6.0 | 2.52MHz |
| AL(LGA)0307-101K-T(R) | 100±10% | 50 | 4.200 | 165 | 5.5 | 2.52MHz |
| AL(LGA)0307-121K- T(R) | 120±10% | 60 | 4.700 | 160 | 5.4 | 0.796MHz |
| AL(LGA)0307-151K-T(R) | 150±10% | 60 | 5.400 | 150 | 4.7 | 0.796MHz |
| AL(LGA)0307-181K-T(R) | 180±10% | 60 | 6.000 | 140 | 4.3 | 0.796MHz |
| AL(LGA)0307-221K-T(R) | 220±10% | 60 | 7.000 | 130 | 4.0 | 0.796MHz |
| AL(LGA)0307-271K-T(R) | 270±10% | 60 | 7.700 | 120 | 3.7 | 0.796MHz |
| AL(LGA)0307-331K-T(R) | 330±10% | 60 | 11.100 | 100 | 3.4 | 0.796MHz |
| AL(LGA)0307-391K-T(R) | 390±10% | 60 | 12.600 | 95 | 2.8 | 0.796MHz |
| AL(LGA)0307-471K-T(R) | 470±10% | 60 | 14.000 | 90 | 2.5 | 0.796MHz |
| AL(LGA)0307-561K-T(R) | 560±10% | 60 | 15.500 | 85 | 2.3 | 0.796MHz |
| AL(LGA)0307-681K-T(R) | 680±10% | 60 | 25.300 | 75 | 2.0 | 0.796MHz |
| AL(LGA)0307-821K-T(R) | 820±10% | 60 | 27.500 | 65 | 1.5 | 0.796MHz |
| AL(LGA)0307-102K-T(R) | 1000±10% | 60 | 31.400 | 60 | 1.2 | 0.796MHz |
| AL(LGA)0307-152K-T(R) | 1500±10% | 20 | 35.000 | 30 | 200 | 0.252MHz |

Packing

Reel and Tape Dimensions



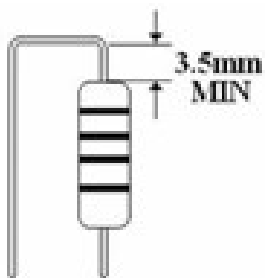
Unit: mm

| TYPE | Dimensions | | | | | | | | | Quantity PCS/Reel |
|-------------|------------|-----|----|----|------|--------|-------|-------|-----|----------------------|
| | G | K | T | W | R | A | B | C | F+0 | |
| AL(LGA)0410 | 1.0 | 355 | 66 | 72 | 17.5 | 52±1.0 | 5±0.5 | 6±1.0 | 0.8 | 5000 |
| AL(LGA)0307 | 1.0 | 355 | 66 | 72 | 17.5 | 52±1.0 | 5±0.5 | 6±1.0 | 0.8 | 5000 |

All product specification and data are subject to change without notice

◆ Lead Forming

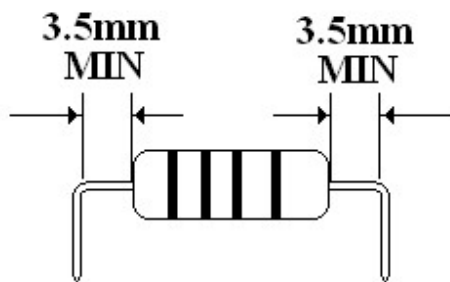
F Lead Form



◆ Bending Guidelines

» The distance between the body and bending point is less than 3.5mm and using strong force, it will cause – “pin falling”.

» Please keep the distance longer than 3.5mm at least



◆ Washing information

» This product(inductor body) can not be washed by using ultrasonic, only can use it to clean the flux left on the pin.